

Inverted Yield Curves

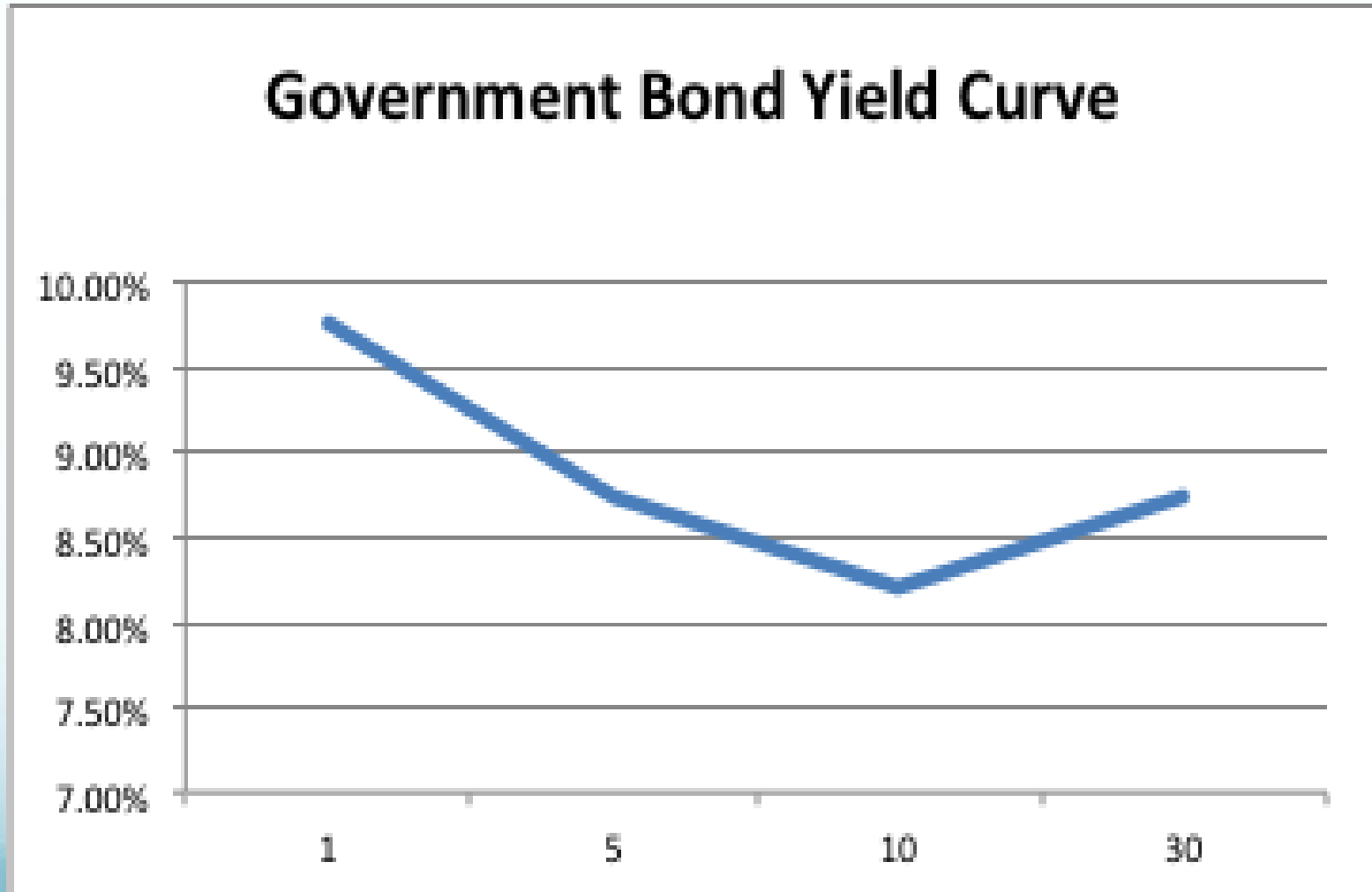
Arjun Parthasarathy

Editor

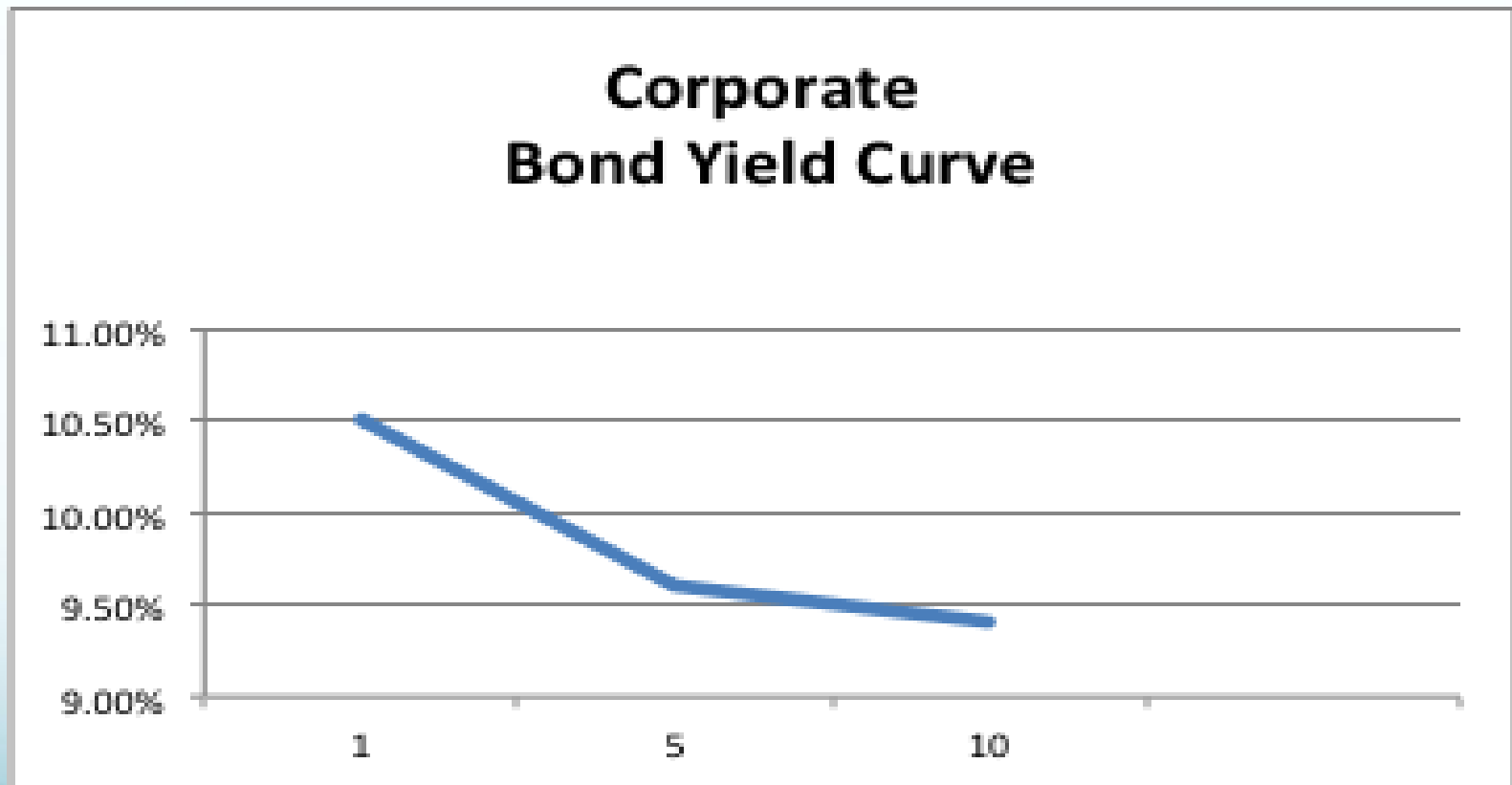
INRBONDS.com



Government Bond Yield Curve

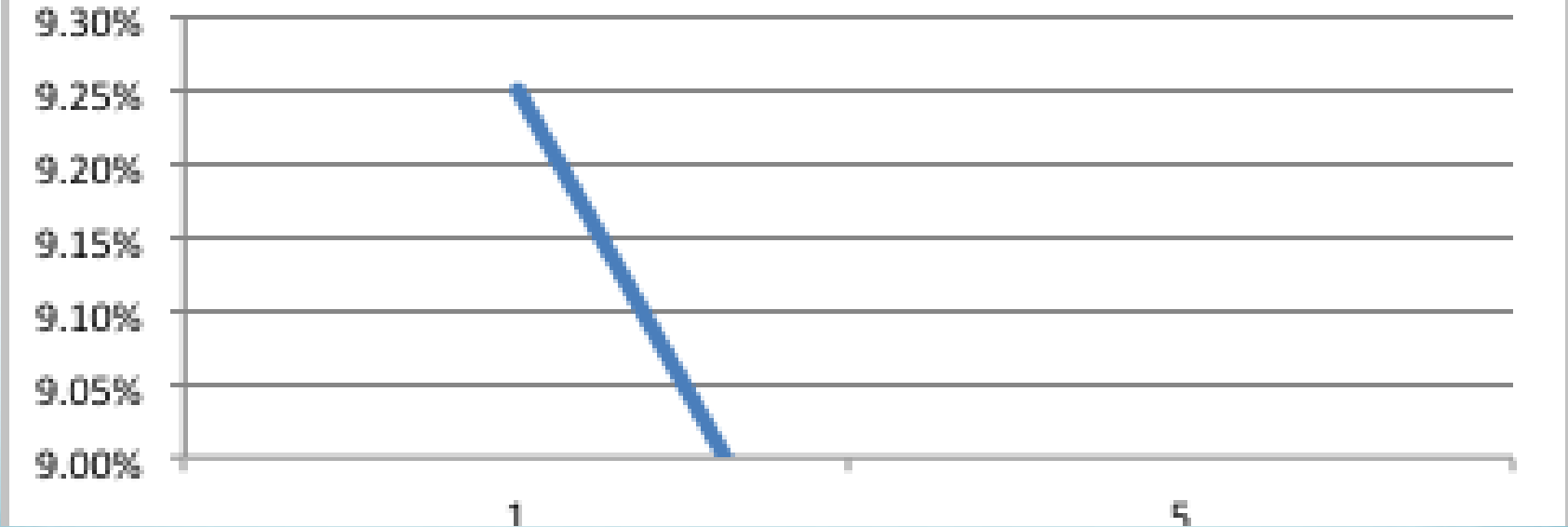


Corporate Bond Yield Curve



OIS Yield Curve

Overnight Index Swap (OIS) Yield Curve



Inverted Yield Curves - Where to Invest?

- Long term yields are reflecting short term interest rates coming off
- Economic growth and inflation expectations are down
- Invest to take advantage of interest rates coming off

Thank You

Information herein is believed to be reliable but Arjun Parthasarathy Editor: INRBONDS.com does not warrant its completeness or accuracy. Opinions and estimates are subject to change without notice. This information is not intended as an offer or solicitation for the purchase or sale of any financial instrument. The financial markets are inherently risky and it is assumed that those who trade these markets are fully aware of the risk of real loss involved. Unauthorized copying, distribution or sale of this publication is strictly prohibited. The author(s) of the content published in the site INRBONDS.com may or may not have investments in the assets discussed in the pages/posts.

Copyright © INRBONDS.com by Arjun Parthasarathy 2013